

Easy to use

Exeter Engineering will train your staff to run AccuVision but with our ID Technology, it almost runs itself, leaving you to better use your team where you need them most.



Size and belt assignment

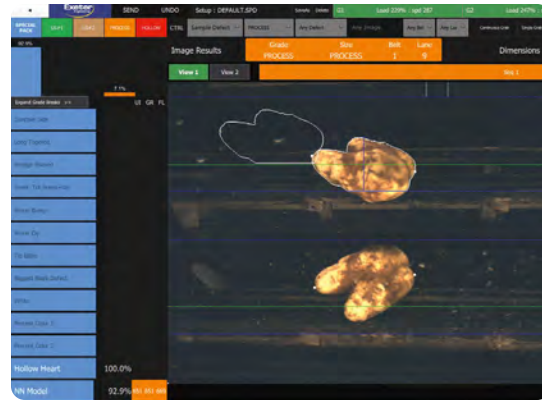
Adjusting size or other criteria is easy and simple. And with AccuVision's sensors, you'll know what percentage of your product is traveling to each lane.



For accurate, efficient and flexible sizing and grading of oblong or irregular shaped products, think AccuVision by Exeter Engineering. Built specifically for you, just the way you need it.

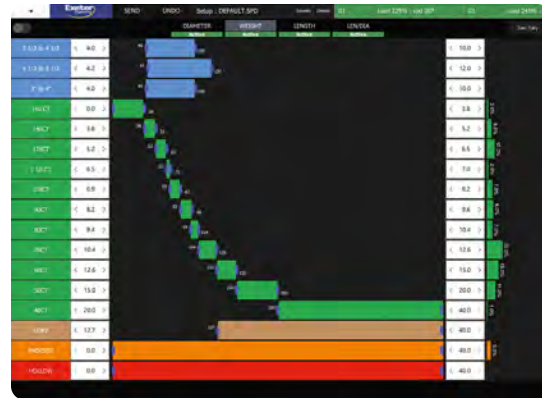
If you'd like more information on what AccuVision can do for you, contact us today.

109 West Pine Street, Exeter, CA 93221, United States
Telephone: +1 559 592 3161
E-mail: sales@exeterengineering.com
Website: <https://www.exeterengineering.com/>



Intuitive software

Control software is simple and intuitive. Operators can make quick and easy adjustments to the parameters, either at the machine or from a remote location, using our proprietary phone and tablet apps. Environment and analysis data is easily exported.

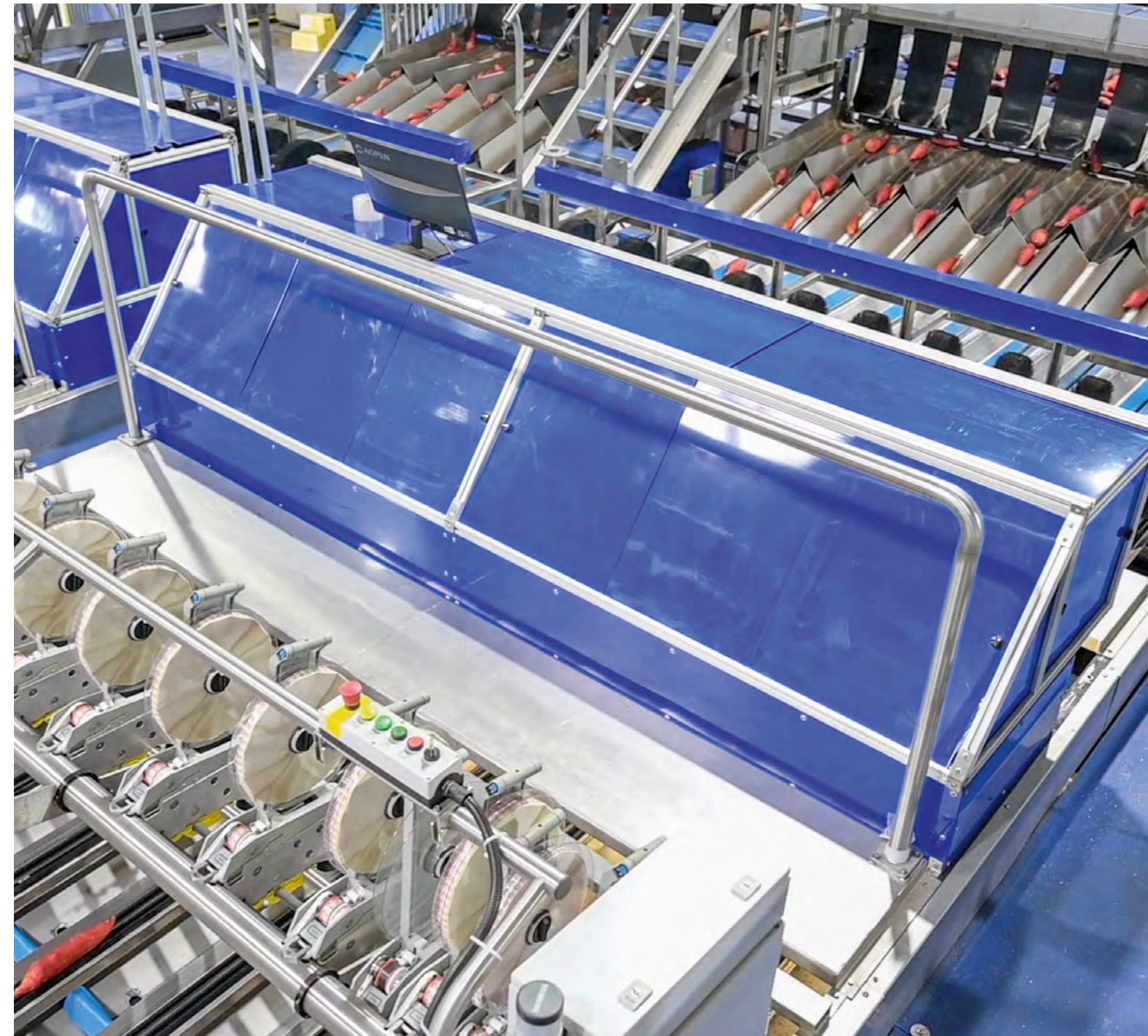


We're there for you

Exeter Engineering has been in business since 1978. We're family owned and operated, and we stand by everything we build. We'll install your AccuVision, train your staff to run it and be by your side as you enjoy the benefits of your new machine. We even offer service contracts that will guarantee a technician at your site within 24 (North America) to 48 (worldwide) hours.

ACCUVISION

Accurate. Efficient. Flexible.



Exeter
ENGINEERING

Exeter
ENGINEERING

ACCUVISION

Sorting excellence and reliability in a flexible fit

ID Technology

Better imagery means better results. Exeter Engineering's AccuVision uses our exclusive ID Technology coupled with simple, reliable mechanics to achieve astonishing accuracy. While others may boast expensive presentation systems, our superior reliability and tight integration gives you consistent, high-quality imagery at faster speeds. Once your product is singulated, our high-definition, multi-spectral cameras and custom-tuned LED lighting will take multiple images in both visible and infrared light. The opposing cameras and integrated mirrors result in sharp, clear images. Our ID Technology's industry-leading artificial intelligence will analyze those images almost instantly, sorting your product according to the parameters you set. And those images will become part of your AI's dataset, and your AccuVision will get better the more you use it. Moreover, we also offer add-on X-ray systems to detect "hollow heart" . . . unlike almost all our competitors.

Engineered to fit your business

AccuVision is engineered to fit your business. We've made AccuVision with speed and flexibility in mind. The transport system can sort up to 5 pieces per lane, per second. Even with that speed, AccuVision requires less maintenance than other sorters, keeping your uptime high and your operating costs low. AccuVision can also make as many separations as you need: up to 26 on current installations. And expansion is easy: you can add lanes in increments of two—up to 12 lanes wide—so you don't need to buy more than you have use for.



High volume, low cost

AccuVision is a high-volume, low maintenance sorter for oblong products that will reliably provide you with exactly what your operation needs. . . now and for years to come. AccuVision can handle a variety of produce, including potatoes, sweet potatoes, mangoes, watermelon and hard squashes. We've designed the AccuVision to minimize downtime and lower your operating costs. That means we don't use fancy mechanisms to do what can be done simply. Simpler construction also means lower purchase costs. And operating costs for an AccuVision are well below other machines too. AccuVision is thus a better bargain now, cheaper to run and will save you from costly annual maintenance bills.

Doing more to work better

Downtime kills your profits and planning. Many sorters can get out of sync, increasing your cycle rate and eventually requiring you to restart the system. AccuVision is built to minimize downtime. We incorporate sensors throughout the AccuVision system, giving you a constant stream of data to tell you what's happening in real time. If a lane is running too fast, you're getting a recycle rate that's too high, or you have a bank of ejectors that's not working properly, AccuVision can tell you exactly where the problem is. Alerts go to the operator or to your phone or tablet, allowing you to easily adjust your AccuVision to solve the issue.

Reliable and low cost

AccuVision is a multi-drop sorter that does what you need it to do, reliably and at low cost. And with Exeter Engineering's exclusive ID Technology, AccuVision's sorting ability is second-to-none.



As big and fast as you need

AccuVision fits your business. Every AccuVision we design is designed for you. Whether you're adding a new AccuVision to an existing set-up or building a completely new line, we'll build and install your AccuVision to do *exactly* what you need it to do. Even if you're attaching your AccuVision system to components made by another company, we'll make it work for you.

